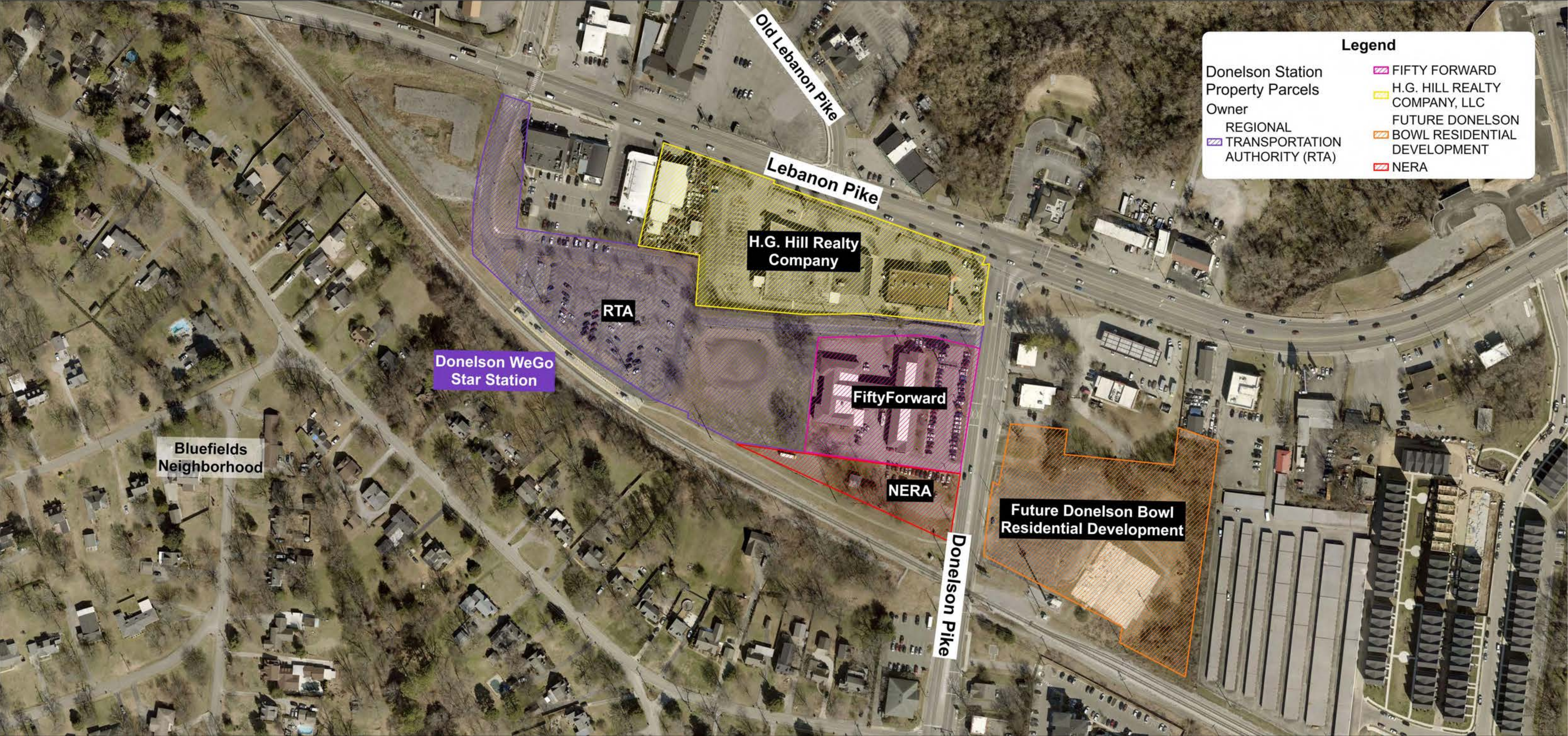


## OVERALL PROJECT SITE EXISTING CONDITIONS

**Description:** The current Donelson Station is located at 2705 Lebanon Pike and is served by the Route 6 Lebanon Pike buses and the WeGo Star. The station has 223 parking spaces available for Park & Ride. Adjacent to the station are FiftyForward, Bluefields Neighborhood, and a strip mall with several local businesses.



# DONELSON STATION PROPERTY PARCELS BY OWNER

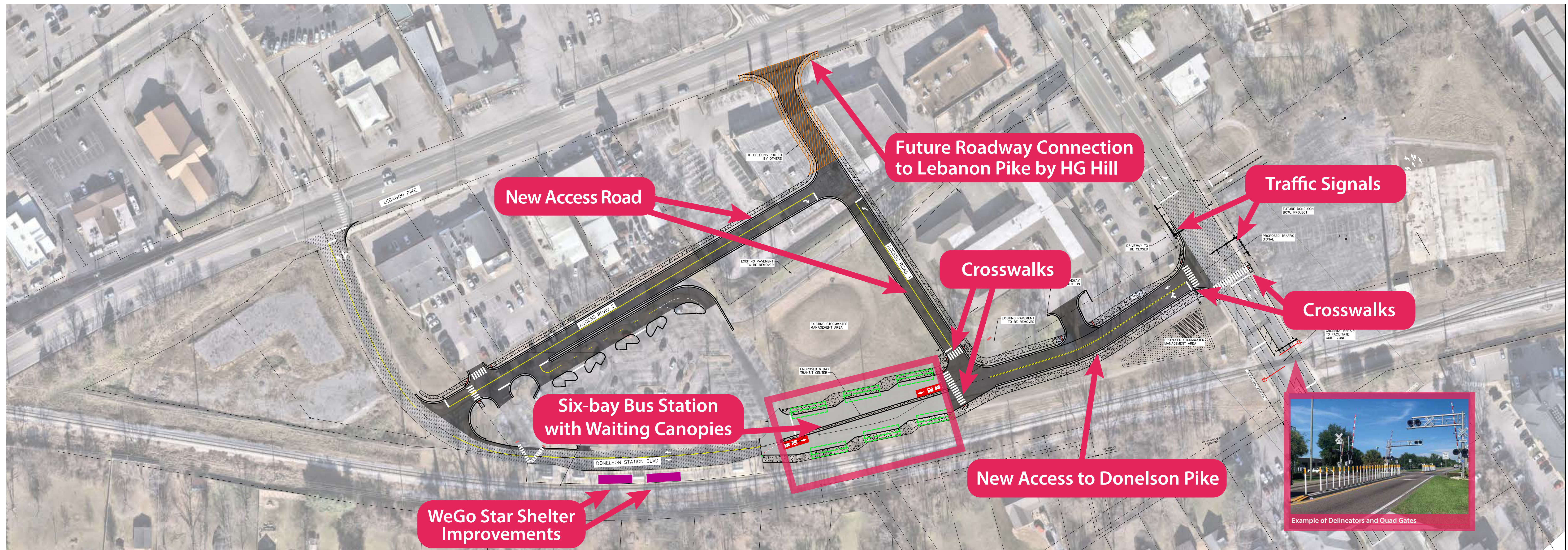


## OVERALL PROJECT SCOPE

**Description:** WeGo Public Transit (WeGo) is in the design phase of the Donelson Station Transit Center project. This project will transform the existing Donelson Station into a Transit Center that will allow for future joint development with private partners. Planned improvements will include:

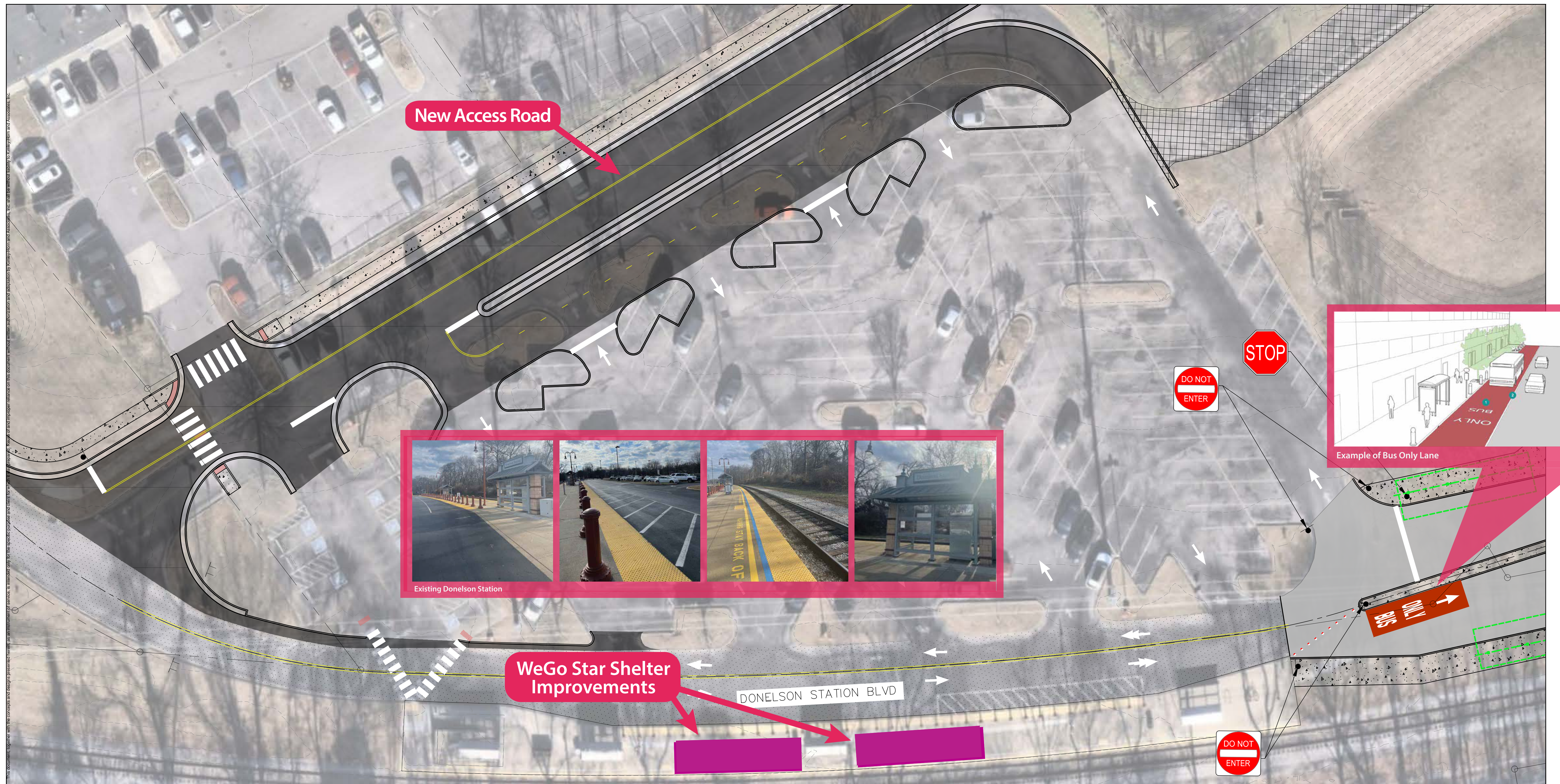
- Six bus bays with accessible covered waiting areas
- Seating, lighting, and security cameras
- Digital signage displaying real-time arrival and departure information
- New access to Donelson Pike at a signalized intersection
- Improved pedestrian connections
- Railroad Quiet Zones for the two adjacent at-grade crossings
- Rideshare pick up/drop off locations
- Bicycle racks and micromobility/bikeshare docking stations
- Climate-controlled indoor waiting area with seating
- Ticket vending machines
- Employee facilities

The project has completed 60% design, with 100% design plans expected by mid 2026.



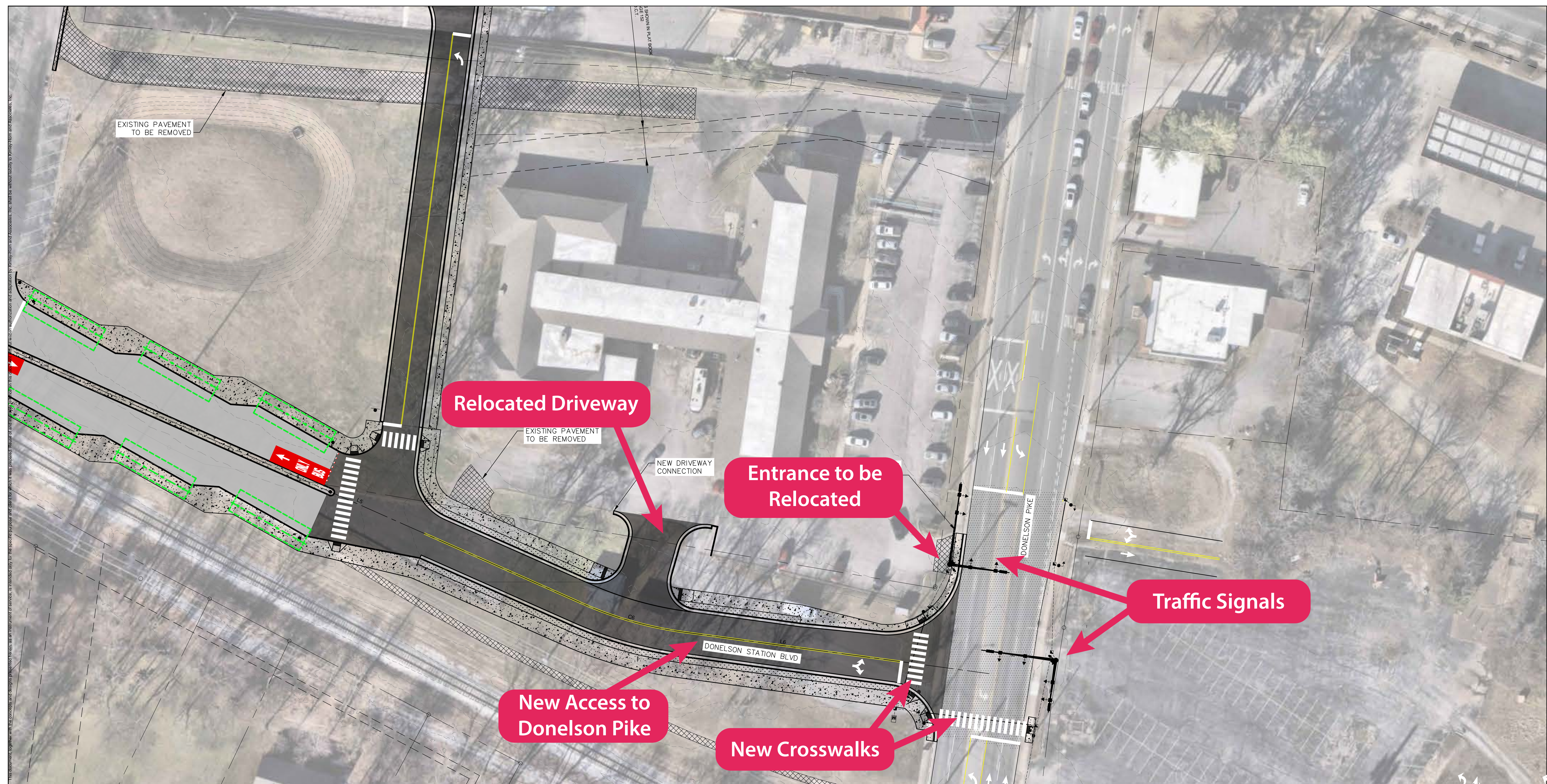
## INTERIM SURFACE PARKING LOT CONFIGURATION

**Description:** The surface parking lot at Donelson Station currently has 223 parking spaces with two entrances and one exit. The proposed design includes a new driveway, new crosswalks from the parking lot to the train station, and a new signalized access onto Donelson Pike. The transit facility will contain the six bus bays and signage to restrict general vehicle traffic. Sufficient parking will remain to meet park and ride demand for the WeGo Star and increased bus service. The Bus Only zone will prohibit general purpose traffic from traversing through the site.



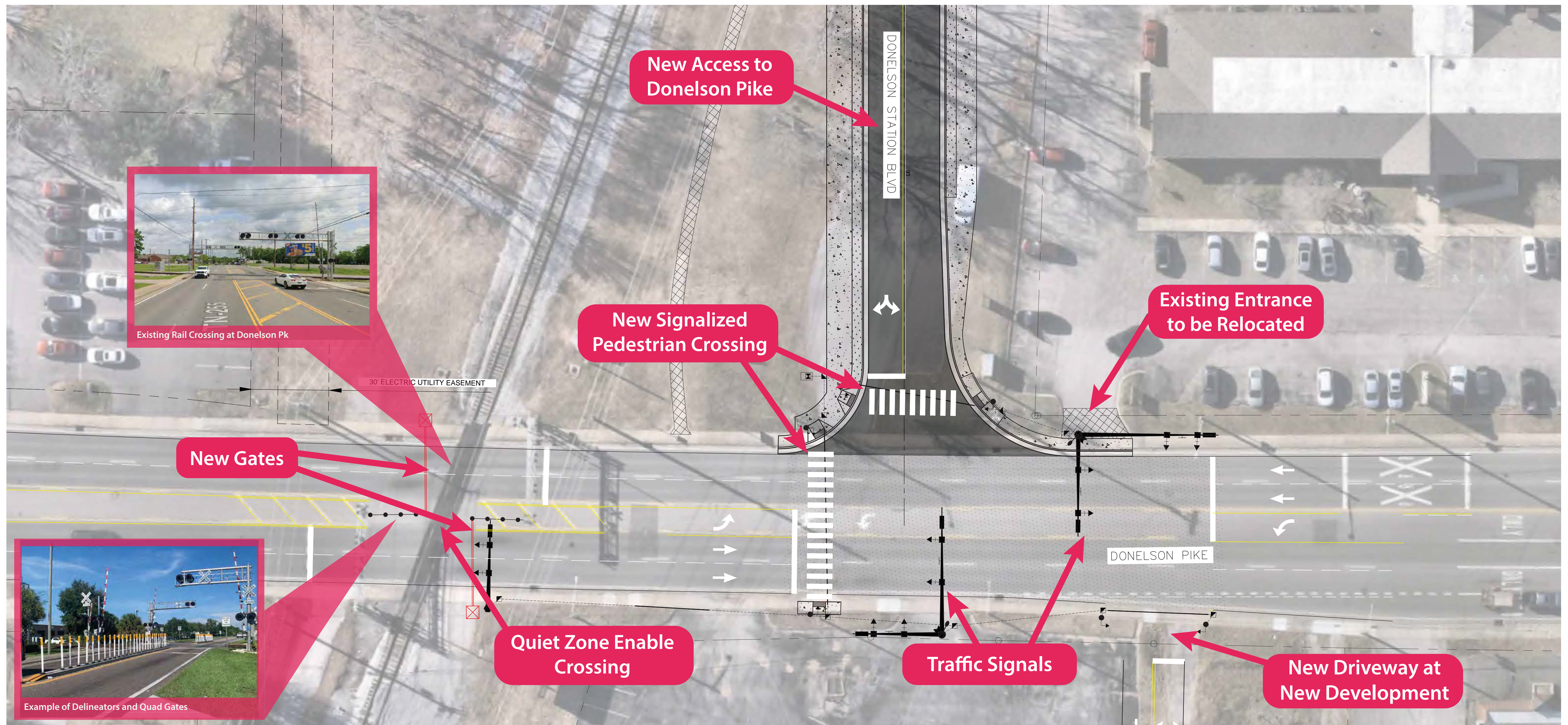
# FIFTYFORWARD ACCESS RELOCATION

**Description:** FiftyForward borders the Donelson Station parking lot and currently has two driveways off Donelson Pike. The proposed changes will relocate the southern driveway to allow construction of the new traffic signal on the south side of the FiftyForward building. Secondary access to FiftyForward will be re-established through the new signalized connection to Donelson Pike, allowing for safer turning movements in and out of the facility. The intersection will also include painted crosswalks and push-button pedestrian signals.



## DONELSON PIKE INTERSECTION AND RAIL CROSSING

**Description:** The existing rail crossing across Donelson Pike is an at-grade crossing with two gate arms and flashing lights that serve as the primary warning devices. Pavement markings and advance warning signage also exist. Given the new access to Donelson Station, the proposed changes would add a new traffic signal just north of the crossing. The improvements also add a second set of gates and delineators (flexible vertical posts that mark and separate travel spaces to improve visibility and safety) between the north and south travel lanes on either side of the crossing to allow for the establishment of a quiet zone (train is not required to blow the horn).

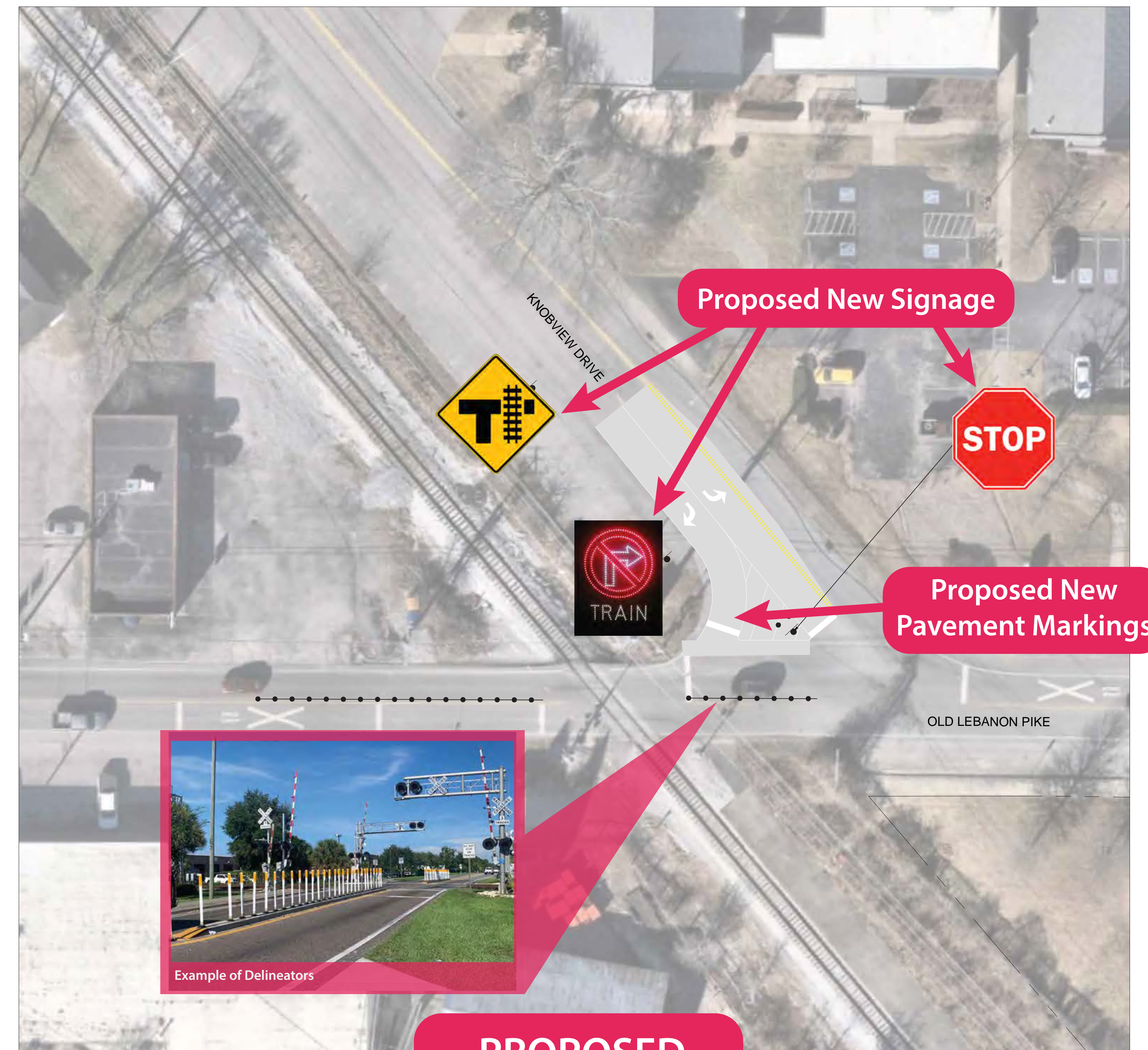


# OLD LEBANON PIKE RAIL CROSSING

**Description:** The existing railroad across Old Lebanon Pike is an at-grade crossing equipped with two gate arms and flashing lights, which serve as the primary warning devices. Pavement markings and advance warning signage are present, but they appear slightly faded. The proposed changes would enhance the crossing by adding additional signage, new pavement markings, and delineators (flexible vertical posts that mark and separate travel spaces to improve visibility and safety) between the east and west travel lanes on either side, allowing for the establishment of a quiet zone (the train is not required to blow its horn).



**EXISTING**



**PROPOSED**

## FUTURE TRANSIT CENTER PHOTO EXAMPLES

**Description:** This board shows photo examples\* of features envisioned for the future transit center, including six bus bays with covered, accessible waiting areas, seating, lighting, and security cameras, and digital signage with real-time arrival information. Images also highlight a climate-controlled indoor waiting area, charging outlets, ticket vending machines, and bike racks to support a safe, comfortable, and multimodal rider experience.

\*Photo examples are of the Dr. Ernest Rip Patton, Jr. North Nashville Transit Center.



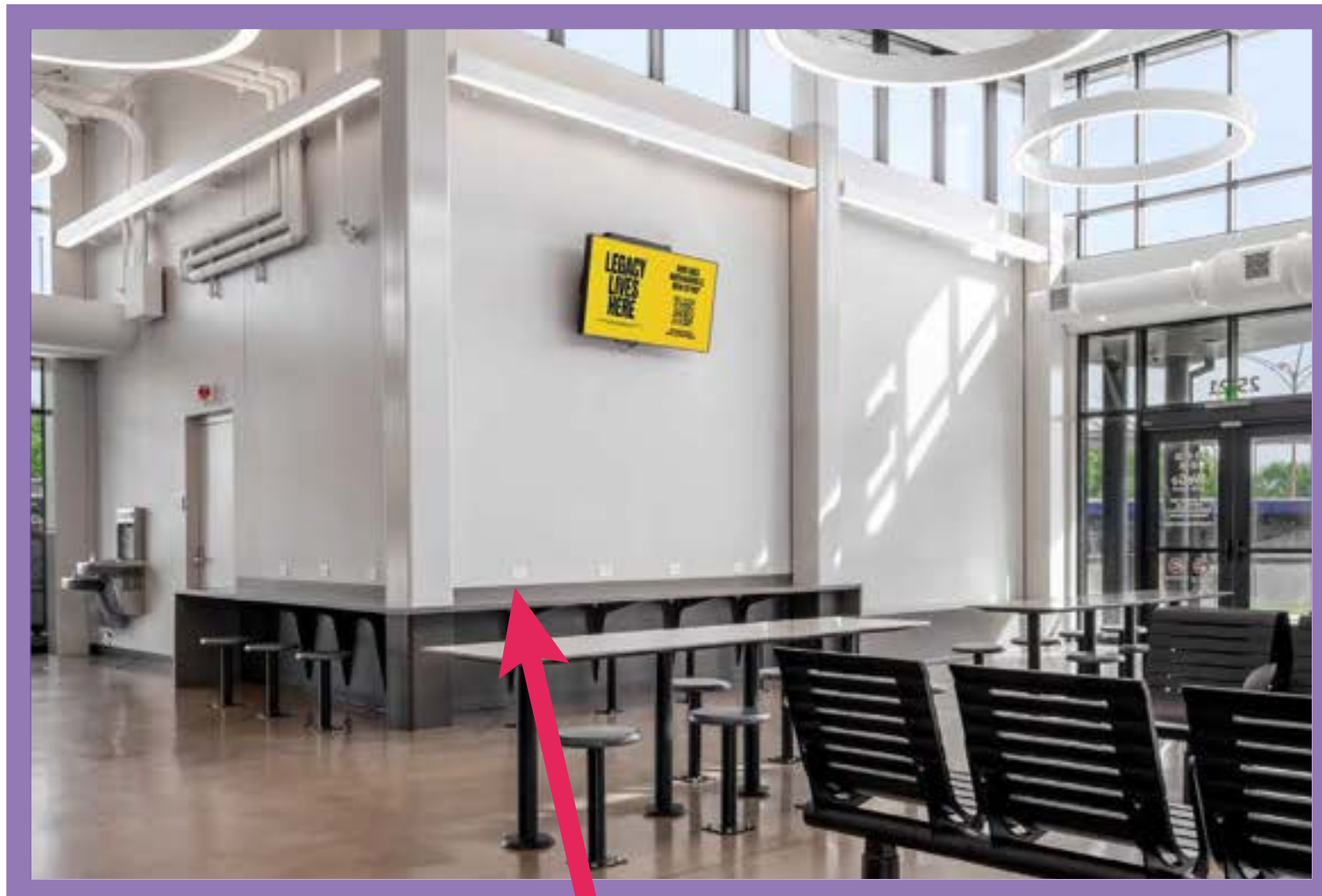
Six bus bays with accessible covered waiting areas



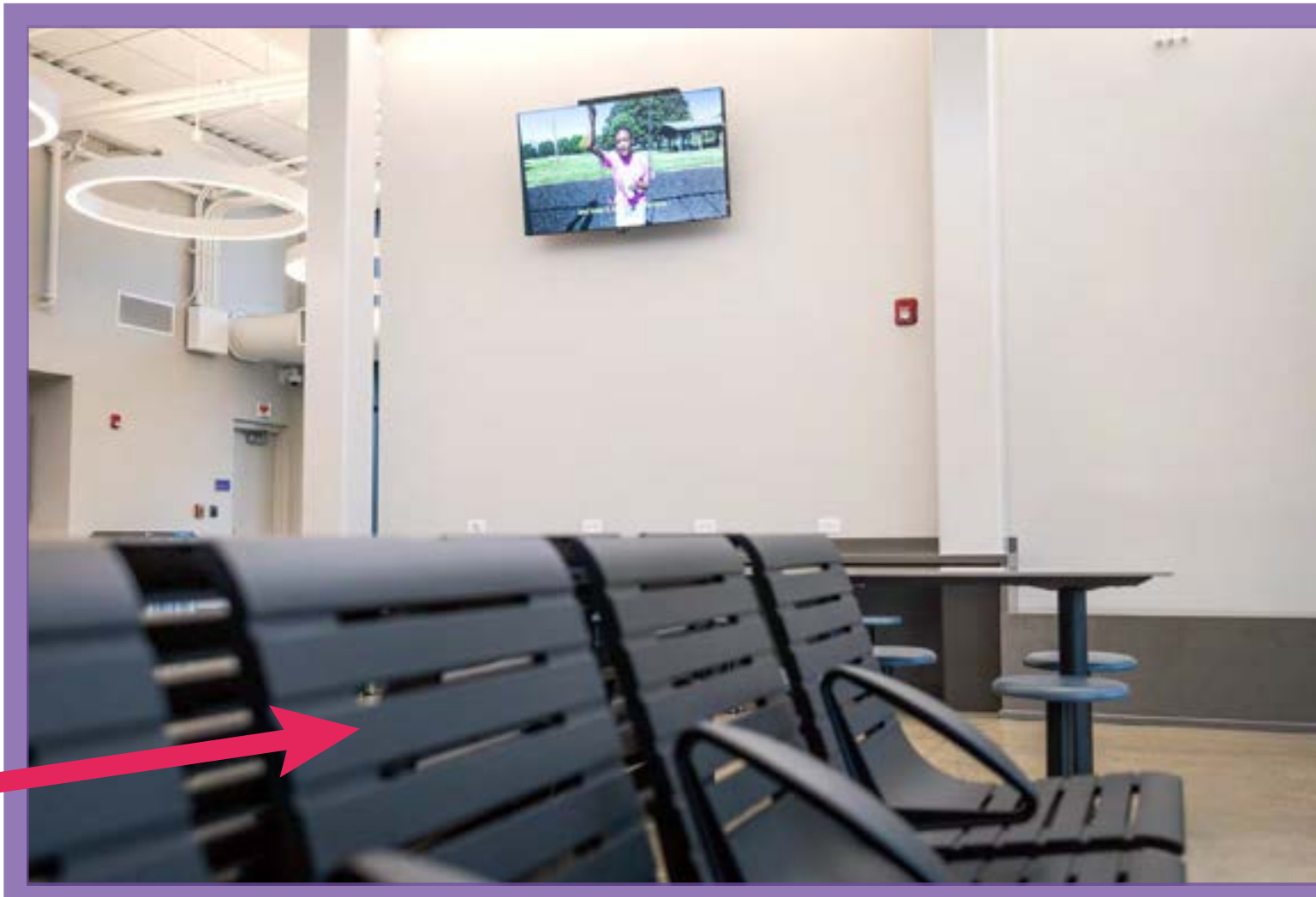
Seating, bike racks, lighting, and security cameras



Digital signage displaying real-time arrival and departure times



Indoor waiting area with seating and charging outlets



Climate-controlled area with ticket vending machines



# INFRASTRUCTURE ENHANCEMENT BENEFITS

**Description:** The Donelson Station Infrastructure Enhancement project will implement various transportation improvements to make traveling in the area safer, enhancing the quality of life for residents near the station and transit riders using it. Here are some of the benefits these improvements will offer.

**Quiet Zones** - The Federal Railroad Administration (FRA) requires trains to sound their horns as they approach public road crossings. However, with enhanced warning and safety measures, the FRA will allow for a quiet zone to be established. With the addition of delineators, quad gates, and signage around the rail crossings at Donelson Pike and Old Lebanon Pike, the crossings permit quiet zones, allowing the train to cross the street without sounding the horn.



Example: Quiet Zone Crossing Delineators and Quad Gates



Example: Crosswalks and Signals

**Improved Safety** - The infrastructure improvements will enhance safety for everyone, whether on foot, traveling by car, walking, or using public transit. There will be additional crosswalks to and from the station. The new traffic signal at Donelson Pike will help traffic and pedestrians safely navigate the intersection and provide safer access to FiftyForward and the Keeton Theater.

**Efficient Travel** - The enhanced infrastructure will allow for more efficient travel for buses, vehicles, and pedestrians to and from Donelson Station. The new roadway will provide designated areas for buses, ensuring they can move through the station reliably and efficiently. The new traffic signal at Donelson Pike will facilitate the safe navigation of traffic and pedestrians at the intersection.



Example: Bus-only Lane

## DONELSON AREA WEGO LINK ZONES

**Description:** WeGo Link is a service that helps transit riders make connections to bus stops. A rider can download and use a voucher that will apply a discount to Uber trips that begin or end at a designated transfer station. You can view all WeGo Link Zones and search to see if your address qualifies for a WeGo Link Zone by scanning the QR code here

