
WeGo Service Changes

Effective July 5, 2026

Changes by Route

Improved Frequency

18

34

Routing Changes

18

Improved Reliability

18

34

76

79

New Service

WeGo Link Zones Expansion

- South Zone
- Bellevue

Increased Span

79

Route 18 Airport

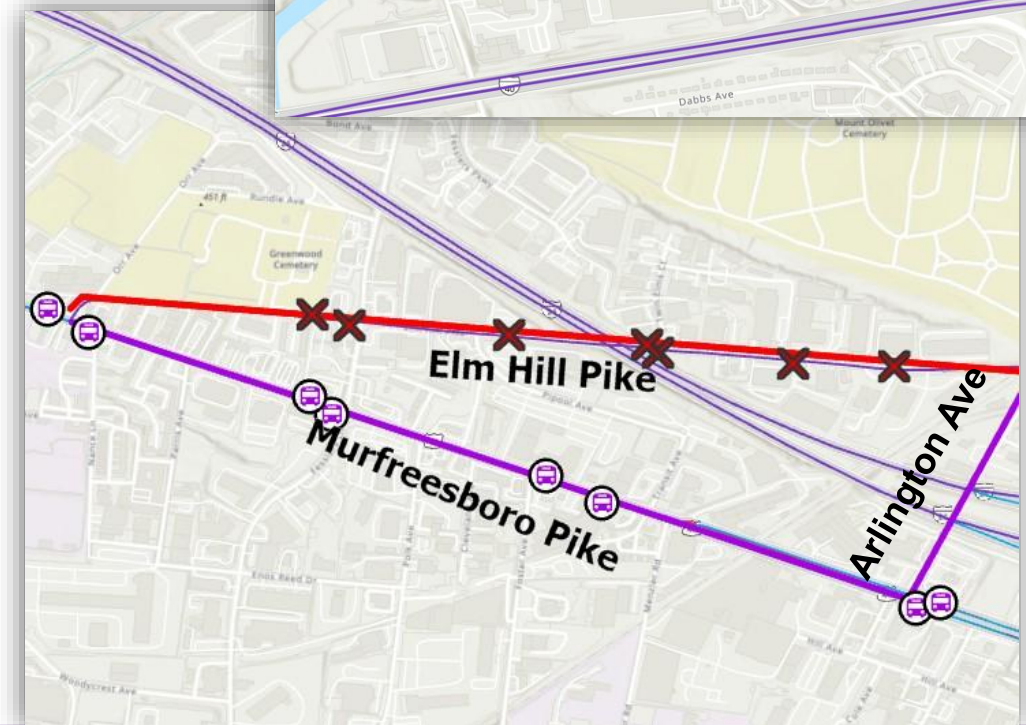
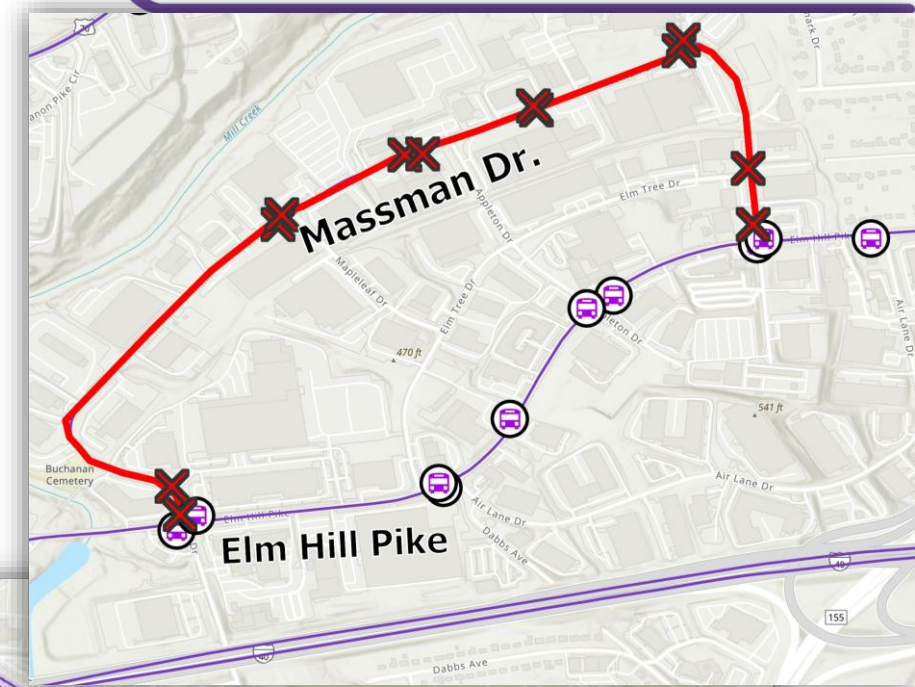
Frequency Improvements

- Weekdays and weekends
 - Improved to every 30 minutes
 - » 6:00 a.m. to 6:00 p.m.
 - Every 40 minutes evenings



Route 18 Airport (cont.)

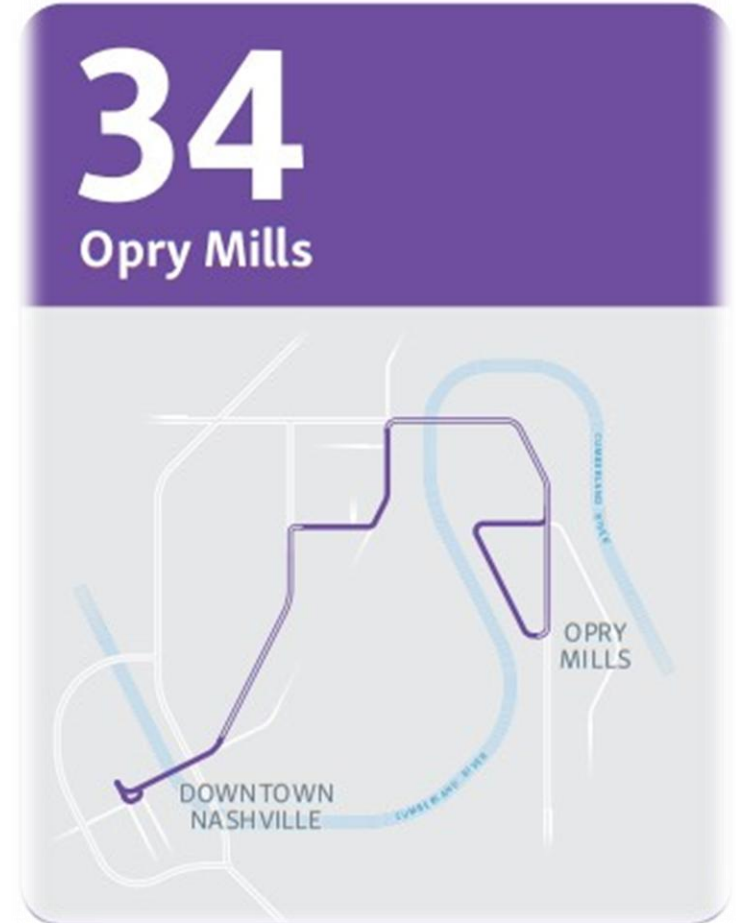
- Route adjustments
 - To improve reliability, the bus will no longer travel on Acorn Drive and Massman Drive and bus stops on this segment to be removed.
 - The bus will no longer travel on Elm Hill Pike between Arlington Avenue and Murfreesboro Pike. Bus stops along this segment to be removed.



Route 34 Opry Mills

Frequency Improvements

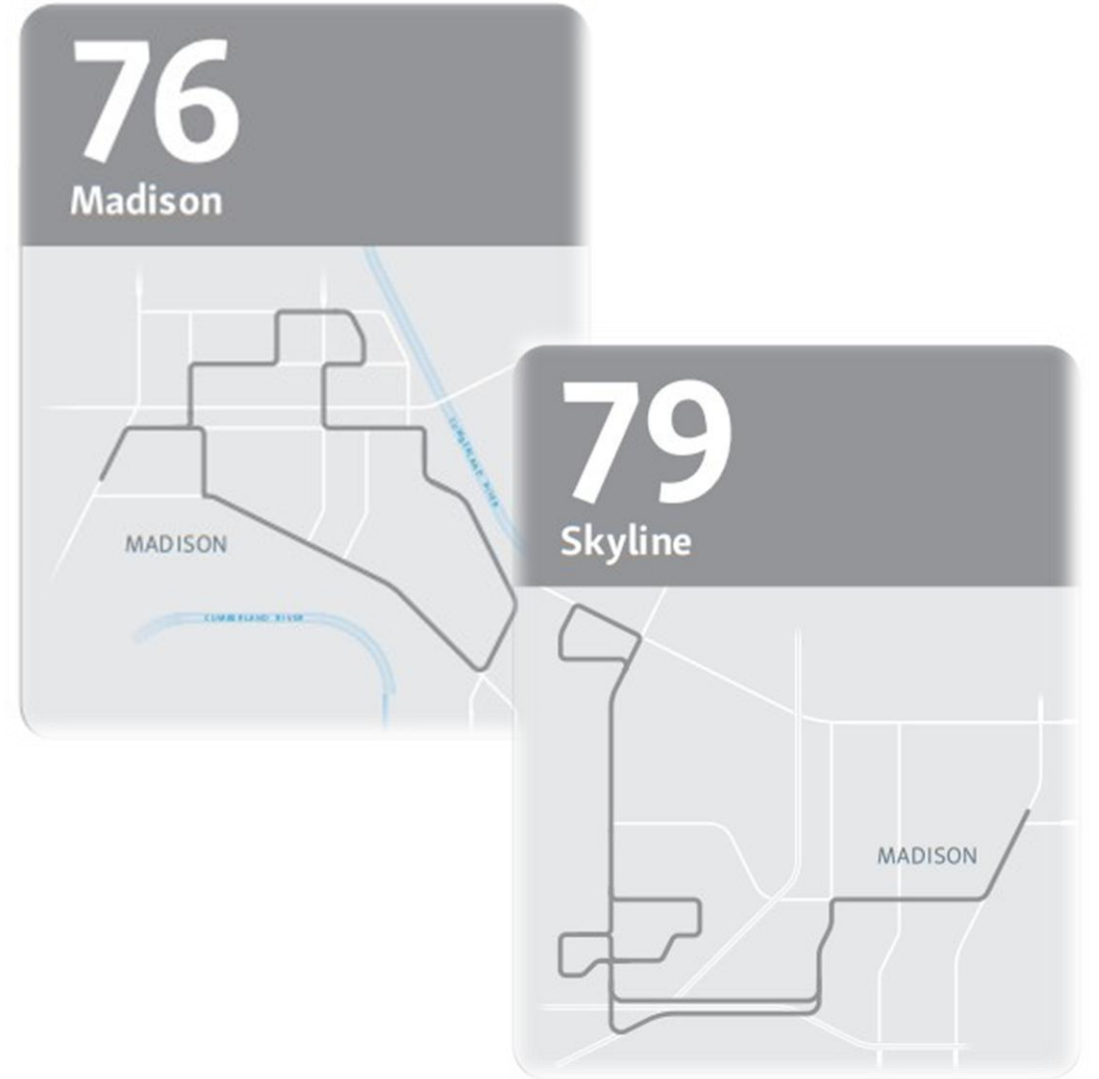
- Weekdays
 - Improved from every 60 minutes to every 40 minutes
 - » From 6:00 a.m. to the end of service



Route 76 Madison & 79 Skyline

On-Time Performance

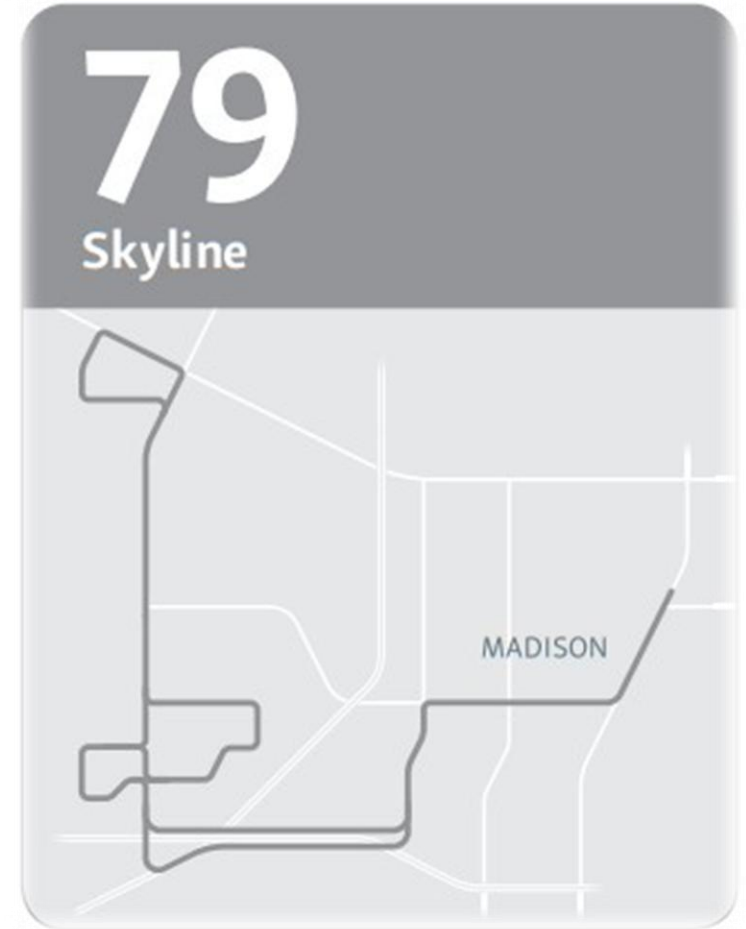
- An additional vehicle will be added to improve on-time performance and reliability



Route 79 Skyline

Service Hours Extension

- Extend hours of operation
 - Until 10:00 p.m.
 - » Will match the rest of the Connector Routes



MNPS Routing Changes

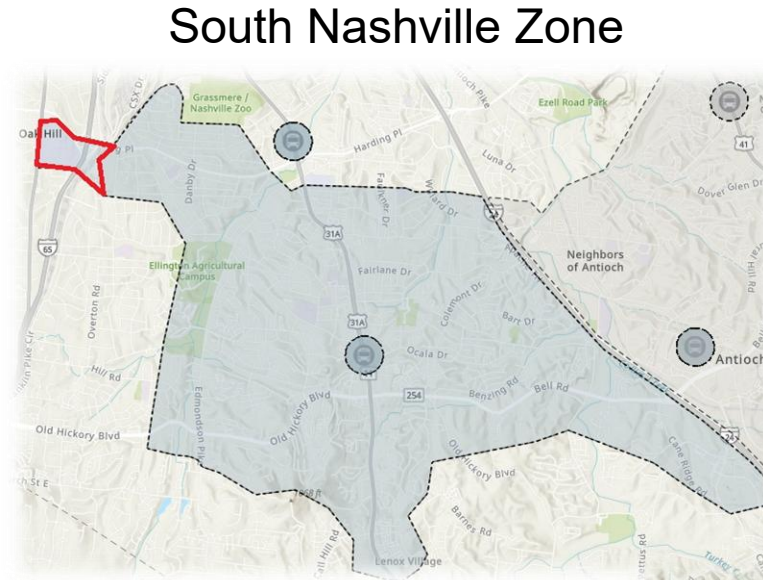
- **Creswell Middle School**
 - Afternoon service to be operated by Route 77 Thompson-Wedgewood
 - No changes to morning service
- **Stratford Middle School**
 - Added trips for middle school bell times
- All non-magnet High School trips to match MNPS morning and afternoon bell times



WeGo Link Zone Expansion

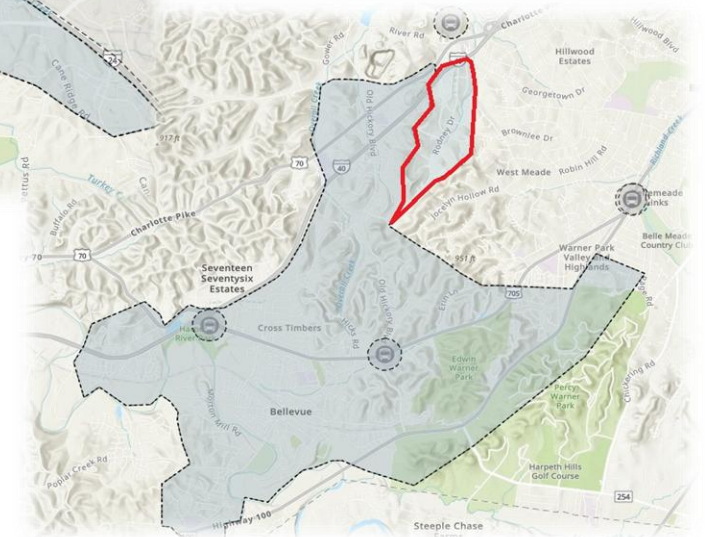
South Nashville Zone

- Zone was extended to include Overton High School



Bellevue Zone

- Zone was expanded to include area around Rodney Drive in West Meade



Bellevue Zone

More Info.

- Questions?
 - www.wegotransit.com
 - Email: WeGoTransit@nashville.gov
 - Call: 615-862-5950 – Customer Care
- **Changes effective July 5, 2026**

